

kirloskar
Oil Engines

TO THOSE WHO
POWER LIFE, WE SAY

MAY THE

POWER

**ALWAYS BE
WITH YOU**



**CPCB IV+
COMPLIANT**

INDIA'S LARGEST
FLEET OF GENSETS

82.5-160 kVA

BETTER POWER FOR A *limitless* TOMORROW

82.5-160 kVA

Prime Rating at rated rpm (as per ISO8528)		kVA	82.5	100	125	160
		kW	66	80	100	128
Genset Model			KG4-82.5WS1	KG4-100WS1	KG4-125WS1	KG4-160WS11
Frequency		Hz	50			
Power Factor		lagging	0.8			
Voltage		V	415 (3Ø)			
Governing class (As per ISO 8528 Part-V)			G3			
DG set Noise level at 1 meter		dBA	<75 (Genset with canopy)			
Fuel tank capacity (Standard DG set)		Ltrs	200	230	230	400
⊕Weight of genset with canopy approx..)^	Dry	Kg	1800	2170	2200	2980
	Wet	Kg	1860	2230	2260	3050
Overall dimensions of genset ^	Length	mm	3200	3200	3200	4200
	Width	mm	1350	1350	1350	1450
	Height	mm	1595	1800	1800	1900
Electrical Battery Starting Voltage		Volts-DC	12			
ENGINE						
Engine Model			4R1190ETA 4G1	4K1080ETA 4G1	4K1080ETA 4G1	6K1080ETA 4G1
Rated output (Prime Continuous rating as per ISO 8528-1)		kW	77.2	114.7	114.7	147.1
		HP	105	156	156	200
No. of cylinder		Number	4	4	4	6
Cubic capacity ²		Ltrs	4.76	4.32	4.32	6.48
Bore x Stroke		mm	110 x 125	105 x 125	105 x 125	105 x 125
Rated Speed		RPM	1500			
Aspiration		NA/TC/TA	TA			
Lube Oil change period		hrs.	500			
Lube oil Sump Capacity		Ltrs	10	14	14	25
Coolant Capacity		Ltrs	15	18	18	28
Addblue/ DEF capacity		Ltrs	25	25	25	45
ALTERNATOR						
Insulation Class			H			
Alternator Efficiency (at 100% load) 0.8 pf**		%	91	91.9	92.4	92.8
Max Voltage Dip at Full Load 0.8 pf lag			< 20%			
Max Time to build up rated voltage at Rated RPM			< 2 sec, provided engine reach the rated speed			

^ Tolerances Apply

⊕ These Weight are for handling & transportation only

** Efficiency of Alternator as per standards IEC60034-1

Notes

Addblue used should follow ISO 22241.

Above specifications are subject to change without prior notice due to continuous technical development

For intermediate ratings, kindly contact nearest Kirloskar office

For Site Conditions other than standard operating conditions consult

Kirloskar Oil Engines for available prime power.

7 Easy steps for a happy Genset Ownership

- Insist on a load-study
- Select the Genset rating as per the load-study and with sufficient margin for future load expansion
- Apply site-selection guidelines carefully
- Insist on installation in line with Kirloskar Green guidelines
- Ensure adequate size and proper connection of cables
- Understand the Genset operation & maintenance procedures during commissioning
- Follow routine maintenance protocols through authorized Kirloskar Green service dealers



Genset kVA 82.5-160 kVA Features



Prime rating and Stand-by rating

'Prime power' is designed for Unlimited hours, as compared to 'Emergency stand-by' designed for 200 hours in a year. Prime rated Gensets also permit 10% temporary overloading. Users need to carefully select the Genset rating to meet their requirement. Kirloskar offers Prime power as a standard offer. Contact Kirloskar for stand-by ratings.



No replacement to displacement

Engine capacity (cc) plays a vital role in Genset performance. Higher engine capacity leads to a robust and stable Genset performance.

Higher engine capacity also enables the Genset to respond quickly & positively to sudden load additions.



Beest-in-class Fluid Efficiency (Fuel & DEF)

Kirloskar Gensets offer a unique combination of CPCB norm compliance and enhanced fuel efficiency. Across the range, Kirloskar Gensets offer substantial savings in fuel cost.

O2E Series (Optimal Operating Efficiency):

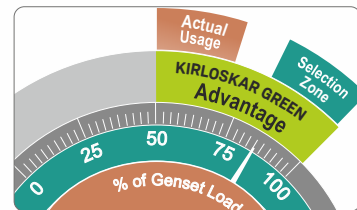
Genset ratings are selected based on the present load and future expansion. Fuel efficiency of most Gensets is optimized at the full rating of the Genset.

In practice, Gensets rarely get loaded to full capacity. Power demand variations across day & night, weekdays & weekends, summer & winter lead to an average 50-70% loading on Gensets.

Considering this practical situation, Kirloskar has extended fuel efficiency optimization from 100%, right up to 50% of rated load.

In line with fuel efficiency Kirloskar Genset ensures the better DEF efficiency and accordingly optimized the DEF tank size.

Combination of best-in-class fuel efficiency & O2E provides a double advantage.



Common Rail Direct Injection System (CRDi):

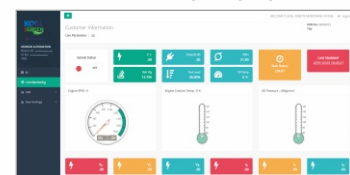
Common rail diesel injection technology, popularly known as CRDi, provides a significant upgrade over traditional mechanical fuel injection systems. CRDi provides precise fuel control, multiple injections, enhanced performance, lower noise and reduced emissions. High pressure common rail system employed on Kirloskar CPCB IV+ Gensets maximizes fuel atomization, delivering a smooth and smoke free performance. Diesel filters with 'A' class filtration are used for CRDi Engines which enhances the filtration efficiency. Common rail fuel injection system will provide a new level of performance, efficiency, and reliability.



Genset Monitoring at Your Finger Tips

Kirloskar gensets are enabled with Kirloskar remote monitoring system which shares Real Time Genset information and location Services. It can be accessed via mobile device or desktop. Kirloskar remote monitoring system also highlights any parameter which needs special attention. These critical indication alerts are sent to user mobile via text message. It also alerts nearest services dealer in case of any emergency break-down.

KRM Desktop Display



**Ask your Dealer for KRM
login details & password**



On Board Diagnostics :

Superior uptime. Genset comes with advanced diagnostic capabilities, this coupled with Kirloskar remote monitoring system provides real time monitoring of performance, emission and service critical parameters this helps for early diagnosis to fix the issues before system breakdown



State of the art Genset Controller

Kirloskar Genset put the command in your hands. Micro-processor based Genset controllers display a host of genset parameters and put all controls at your fingertips.

Monitoring Features:

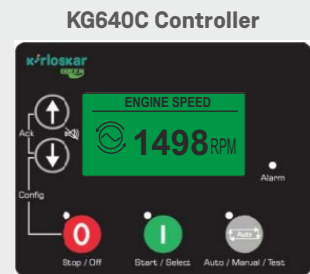
- Phase Voltages & Currents, Frequency, Genset kVA, kW, kWh, kVAR, Power Factor
- Lube oil Pressure, Engine Temperature, RPM, Run Hours, Number of starts, Fuel Level, Auto / Manual Stop, Battery charge condition, AMF feature

Diagnostic Features:

- Battery charging failure, Over/Under speed, Over Current, Over/Under Voltage, Over kW, Phase Seq., Phase missing, Mains Under voltage, Low fuel level
- Low lube oil Pressure, High Engine Temperature, Low/High battery voltage, Low Fuel Level, Over Crank protection, Routine maintenance indicator, Genset Test Facility, Mains Frequency

Optional Features:

- Modbus Communication



Peace-of-mind Ownership

Kirloskar Gensets have always been preferred for their robust design and reliability over long usage life. Kirloskar range carries the confidence of well-established and proven engine platforms. For compliance to revised CPCB norms, Kirloskar has carefully selected those technologies which not only retain, but enhance Gensets durability and on-site serviceability.

Thus, Kirloskar Gensets offer you many years of trouble-free performance; backed by the assurance of prompt support. Peace-of-mind driven by product reliability and low cost of ownership.



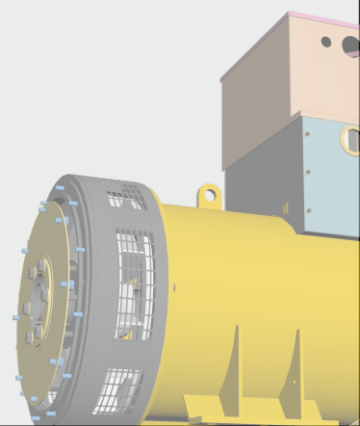
Alternator Features:

Kirloskar Alternator is compact in design, rugged and best in class efficiency. Advanced Digital AVR improves the Voltage regulation and Response time.

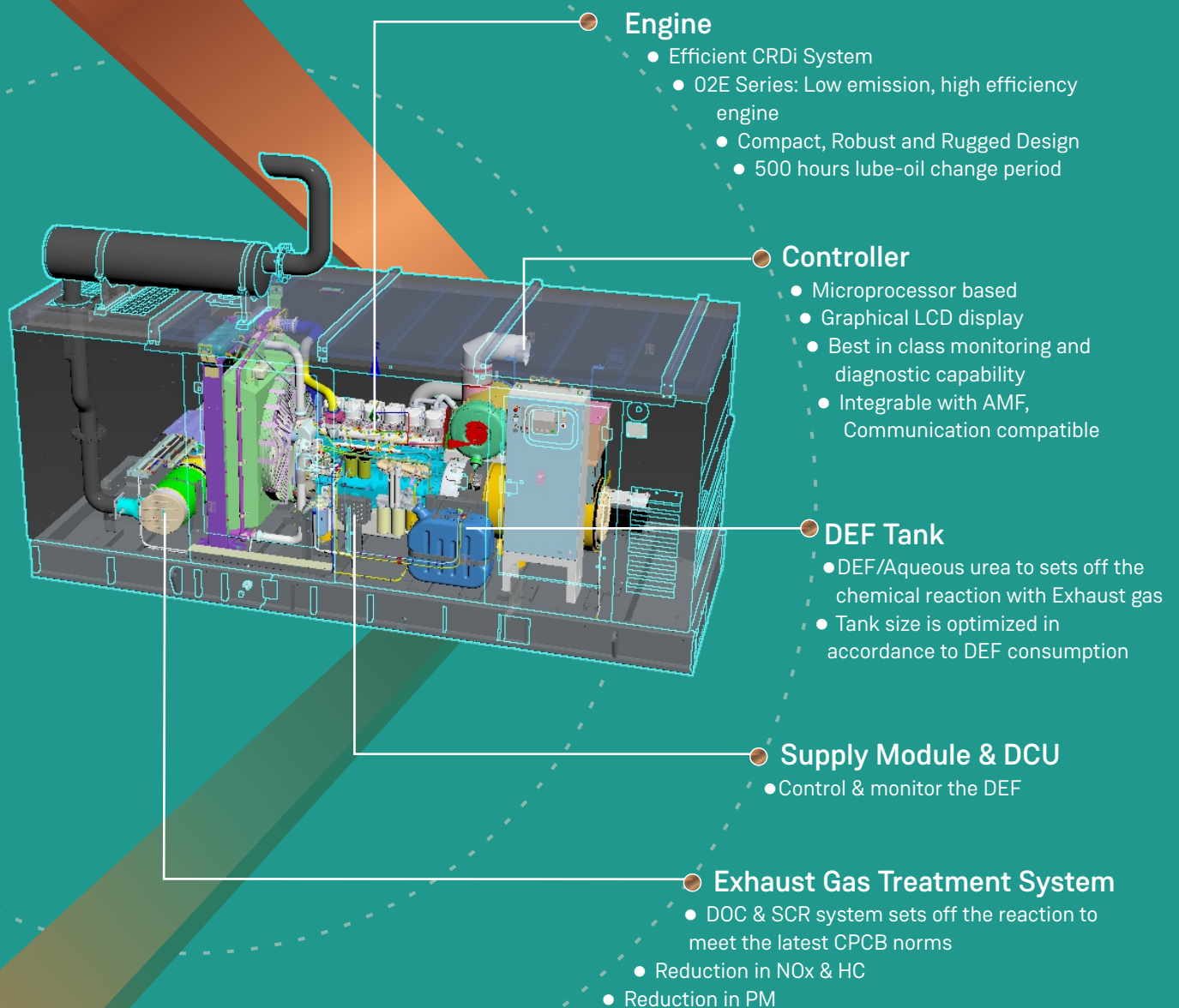


Compact footprint:

Kirloskar CPCB compliant Gensets are having compact footprint which results in space saving. CPCB compliant technology is upgraded by maintaining the compact footprint of Genset.



Glimpses **CPCB IV+** Genset (82.5-160 KVA)



02E - Optimal operating efficiency
DEF - Diesel exhaust fluid
DCU - Dosing control unit
DOC - Diesel oxidation catalyst
SCR - Selective catalytic reduction

EFFICIENCY. INTEGRATED

A KIRLOSKAR PROMISE

Efficient Products

- India's first IoT enabled digital genset
- Designed for convenient user experience
- Best-in-class fuel efficiency delivered
- Compact design & long life product
- Optimized consumption of lubricant oil
- Optimized total cost of ownership (TCO)
- All products tested before delivery

EFFICIENT



EFFICIENT



Efficient Solutions

- Load sizing for every single genset order
- One stop power back-up solutions
- Serves complete application gamut
- Highly trained & experienced team
- Non-conventional solutions (bio-diesel)
- Specific solution for harsh environments
- Exhaust mgmt., foundation, cabling etc.

Efficient Service

- India's widest service dealer network
- Kirloskar connect-self-service application
- eFSR-Electronic field service report
- Over 6000 trained service engineers
- Over 600,000 machines under care
- 98%+ parts available at each outlet
- Flexible & economical AMC-Bandhan

EFFICIENT



EFFICIENT



Efficient Network

- Consistent, reliable & long-established
- 250+ expert touch points across India
- 500+ solution oriented professionals
- Uniform customer experience across
- Central system for enquiry to PRF
- Fair trade practices & Price transparency

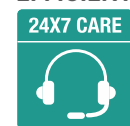
Efficient Deliveries

- Cost-effective deliveries guaranteed
- Assured 7-day delivery of gensets
- Supports project management system
- Reduced working capital for customer
- Award-winning replenishment model
- Assurance of FRESH products always

EFFICIENT



EFFICIENT



Efficient 24X7 Care

- 24 X 7 operational customer care centre
- Team of over 70 trained & focused exec.
- Tracking every service request till closure
- Centrally maintained CRM for all requests
- Satisfaction call after every SR closure
- Central sales lead tracking system
- Continuous NPS and CDI measurement

We offer products for every segment & take part in the India's growth story.



Infrastructure



Industry



IT/ITES



Hospitality



Health



Reality



Government



Logistics

kirloskar
Oil Engines

EXPRESS ENGINEERS AND SPARES PRIVATE LIMITED

Email ID: expeng@generatorbazar.com Website: www.generatorbazar.in

Registered Office: 83, Rajdhani Nikunj, 94, I. P. Extension, Patpar Ganj, Delhi -110092, India

Corporate Office: A-18 Rampuri, Surya Nagar Market, Ghaziabad, Uttar Pradesh - 201011

Tel: +91 0120 4100100, 4377077, 9212757575, 9810885060